



# USING ML AND PYTHON IMPLEMENTING SMART COLLEGE CHATBOT

**Dr. Kavyashree N<sup>1</sup>, Pooja T M<sup>2</sup>, Anusha C M<sup>3</sup>**

<sup>1</sup>Assistant Professor, Department of MCA, SSIT, Tumkur

<sup>2</sup>4<sup>th</sup> sem MCA, SSIT, Tumkur.

<sup>3</sup>4<sup>th</sup> Sem MCA, SSIT, Tumkur

## ABSTRACT

*The days of only captivating with the aid of a console are over. Clients are increasingly interacting with frameworks via voice collaborators and chatbots. A chatbot is a computer software that can converse with humans by utilising Artificial Intelligence in the informative phases. When the chatbot receives input from a client, it preserves the information and response, allowing a chatbot with limited starting information to evolve using constructed responses. As the number of responses increases, so does the chatbot's accuracy. The ultimate goal of this endeavour is to introduce a chatbot component and API for Matrusri Engineering College. This project will investigate how advancements in Artificial Intelligence and Machine Learning innovation are being used to operate on various administrations. Clearly, it will look into the advancement of Chatbots as a data distribution route. The computer selects the nearest matching reaction from the nearest matching proclamation that fits the input using WordNet, and then selects the reaction from a predefined set of articulations for that reaction. This task intended to implement an online chatbot framework to assist clients who access the school website, utilising devices that uncover Artificial Intelligence strategies, for example, Natural Language Processing, allowing clients to speak with the school chatbot utilising regular language input and to prepare the chatbot utilising appropriate Machine Learning techniques so that creating a response will be possible. There are several apps that combine a human look and hope to replicate human exchange, but in most cases, information on chatbots is saved in a data set created by a human master.*

**KEYWORDS:** Chatbot; Artificial Intelligence; Machine learning; WordNet; Natural Language Processing

## I. INTRODUCTION

Improvements in the realms of system administration and data innovation have been diverse in the implementation of Artificial Intelligent (AI) frameworks. These frameworks are becoming closer to human workouts, such as decision-making sincerely strong organisations, sophisticated mechanics, regular language handling, and so on. Without a certain, even in the phoney smart domains, there are a few combination methods and adaptable tactics that produce increasingly sophisticated strategies. That is true, yet presently there are a few Natural Language Processing (NLP) [1] and intelligent frameworks that can comprehend human language. Counterfeit sharp frameworks educate and recover information by analysing necessary electronic materials that have existing on the internet. A chatbot (also known as a loudmouth, Bot, or Artificial Conversational Entity) is an artificial intelligence (AI) programme [2] that replicates human conversations by remembering content and correspondence for natural language using artificial consciousness strategies such as Natural Language Processing (NLP), image and video handling, and voice investigation. The chatbot for school board framework was created using artificial consciousness calculations that inspect the client's inquiries. This chatbot framework is a web application that responds to a client's separate inquiries. Clients

must essentially choose the sequence for requests and then pose the question to the bot that will take note of it. To respond to the client's requirements, computerised reasoning has been integrated. After that, the client can secure the appropriate responses to their inquiries. Man-made consciousness computations are used to determine the appropriate reactions. Clients will not have to travel to the school or school location to make demands. Clients must enrol in the framework and must login to the framework. Clients can access the various assistance sections after logging in. There will be many assistance pages where customers with disabilities may communicate by asking questions about school activities. The framework responds to consumer enquiries using an appealing Graphical User Interface (GUI). With the use of this online application, the client may inquire about school-related exercises. Affirmations, scholastics, Intake, and other social exercises are examples of school-related activities. It will keep students/other clients interested in school activities. A chatbot is an Artificial Intelligence software that can converse with humans in natural language, similar to how people communicate with one another. It can substitute a human for some tasks like as responding queries. A chatbot is an expert who assists clients in using standard language. It was filled in as a scheme to fool others. A few functions of chatbots, such as



user care, client support, and so on, employ Artificial Intelligence Markup Language (AIML) [3] to visit with clients. One of the first goals of chatbots was to mimic a wise person and entice the recipient of the discussion to comprehend the genuine working alongside various plans and capacities for their usage has often expanded. These chatbots may appear to fool the client into believing that they are "talking" to a human; yet, they are limited in further extending their understanding base during runtime, and frequently have few mechanisms for monitoring all conversation data. Chatbots employ AI to appear at fake insight, aiding them in comprehending the client's inquiry and providing an appropriate response. For giving or assisting the client, chatbots are created utilising the Artificial Intelligence Markup Language (AIML). This includes programming that will use Artificial Intelligence to assist the customer in visiting with a computer. The client can inquire about the frameworks in the same way that he or she would with any other person. The following is an excess of paper: Area II is about the Survey Area III covers the suggested framework with philosophy, Area IV proposes outcomes and discussion. Finally, part V concludes the paper.

## II. WRITING SURVEY

Various applications may be fostered by utilising the science of Artificial Intelligence. A school chatbot framework is one of several mentioned in this study. Regardless of how a chatbot may be supplied in many industries such as advertising, training, banking, healthcare, and finance. The standard rule-based chatbots are being improved to be instructional, responsive, and capable of completing correspondence in conversational human language. This necessitates the integration of developments in Natural Language Processing (NLP) and Machine Learning (ML). the basis for school chatbots There is several approaches to dealing with that role. The geography of the chatbot, the features it intends to provide, the language of correspondence, the end client, and so on all influence the technique of choice. In this writing investigation, a fraction of the techniques is knowledgeable. Michael Maudlin created the "Babble Bot Algorithm" in 1994, which was published in the book Julia and was used to answer queries. Using this core concept, other projects were established to construct a chatbot framework. The client must first log in to the Chat-Bot programme. At that time, the client is free to file complaints and ask inquiries. When a client enquiry is made to the bot, the question setting is sensed and NLP is used is applied. To detect the feeling of the words, WordNet estimate [4] and linguistic structures marking are utilised. Client inquiries are genuinely examined in the information data collection. Assuming the correct reaction is found, the solution is subsequently sent to the client. If a specific query is not located in the data set, such requests are handled by the director. When the head responds to the enquiry, the appropriate response is dispatched to the client. Question and response are included in the data set so that if such requests are submitted, they are tended to authentically from the data collection. Because this manager does not need to handle the same query sincerely any longer. Various computations, such as the Porter Stemmer Algorithm [5], are used to remove postfixes from English words. The word demand vector procedure is used to

compare the word demand proximity of two phrases. Sentences with the exact same words but in different requests may attain varying degrees of significance. The customer is permitted to ask several foundation-related questions. Chatbots, after receiving a client enquiry, verify the certainty [6] score and provide a real response to the client's question. The catch match computation is performed after the client request has gone through three watchword matching calculations [7]. If the matching of catchphrases fails, the inquiry is supplied via 2 and 1 watchword coordinating with the data set. Even yet, if the inquiry doesn't have the proper catchphrase match, the chatbot programme will respond with No Answer Found. Another computation used for chatbot applications is the use of reasoning connections to select a response. The purpose of an information connector is to receive input from a bot source and then transform it into a configuration that a chatbot can understand. The chatbot system makes use of an exceptional reasoning connection, which enables it to choose the best reaction from all possible responses. The Multi Logic Adapter is used to select a single response from the responses produced by all of the logic connections that the visit bot has been configured to use. Word implanting completes data preprocessing. Each word is assigned to a vector, and the vector structure is addressed in a one-hot encoded structure [8], implying that 1 addresses the presence of a word and 0 addresses everything else. The Regular Language ToolKit (NLTK) is a Python module that aids with Natural Language Processing (NLP). Tokenizers are incorporated into NLTK [9]. The NLTK incorporates a broad range of tokenizers, including letters, ways, words, watchwords, class, N-gram, design, and so on. The word-punkt tokenizer [10], which separates sentences at obvious spaces, is the most often used tokenizer. The NLTK tokenizers' accuracy, speed, and viability are modelled. Head logs in and can conduct tasks such as removing incorrect responses or incorporating emphatic responses to specific requests. The chatbot programme replies to client inquiries with the assistance of updated thinking.

## III. PROPOSED SYSTEM

This College Chatbot System is a computer programme that responds to customer enquiries. Figure 1 depicts the framework design of the chatbot framework. Right away, the Chatbot greets the customer and invites him/her to login to the framework by providing his/her email address. The client then locates the buttons in the UI that compare to the various school categories. After going through the buttons, the chatbot framework asks the client if it is beneficial in providing a response. If the customer cannot find the desired response, he or she might continue with the visit to the school chatbot framework by briefly describing their inquiries.

After that, the chatbot framework uses Machine Learning computations to distinguish the client inquiries. When a customer asks a question, the catchphrases in the inquiry are identified using the WorldNet Algorithm. As the investigation progresses, the portrayal of each character might shift from one to the next. Clients may pose a similar inquiry in a variety of ways. One customer asks a query that is both fundamental and evident, yet another client may request the identical inquiry in

a completely different context. As a result, it is required to determine what precise facts the client is attempting to be aware of and to choose the appropriate response to the corresponding client inquiry. The chatbot architecture immediately removes

prohibit words from customer input, presuming they are present in the queries requested by the client. After removing the prohibit words from the client inquiries, the tokenization and lemmatization[11] processes are completed.

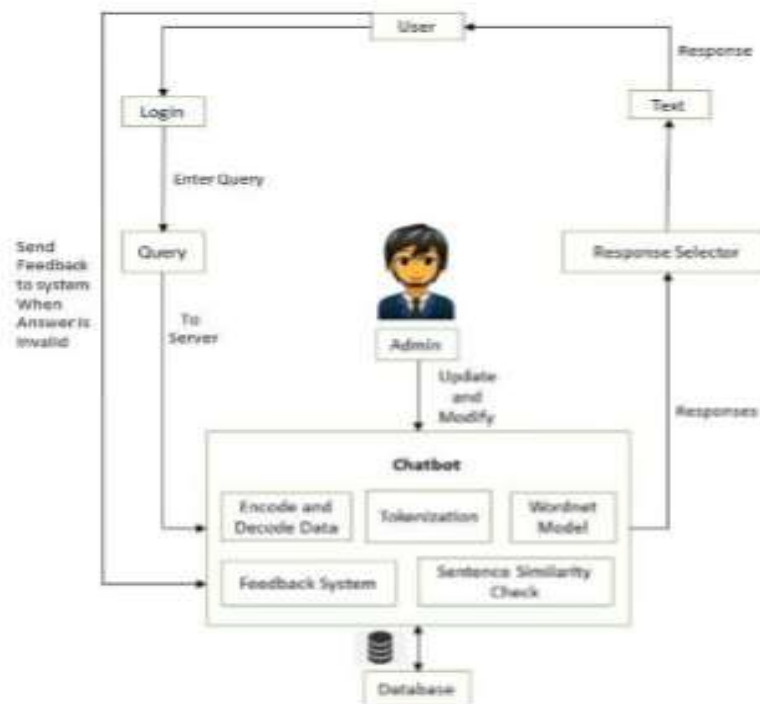
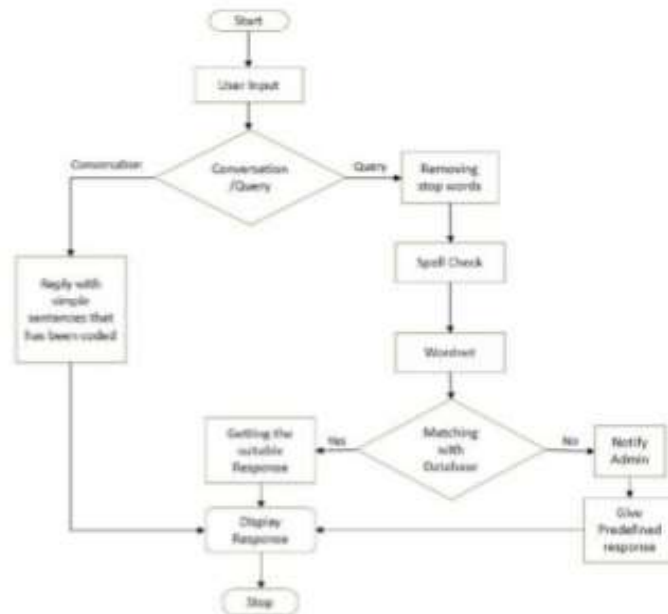


Fig.1. Engineering of a School Chatbot Framework

Tokenization is the process of breaking down a large message or message into individual words or phrases. Lemmatization is a sort of stemming that involves bringing together the many curvature types of a word so that they may be studied as a single item. The spell checker [12] is then used to detect and correct spelling errors in the query, after which a plausible response is examined in the information data set [14] by employing the sentence similtude and WordNet Algorithm [13]. WorldNet is an English-language semantic and lexical knowledge source. It is employed to It groups English words into groups of counterparts known as synsets [15], provides brief explanations and use models, and maintains various relationships between these equivalent word sets or their persons. If the response is located in the data set, it is displayed to the client; otherwise, the framework informs the administrator about the missing reaction in the data set and displays a predetermined reaction to the client. By registering into the administrator block on the site, the administrator may compose the missing reaction into

the data set, so that if the client asks a similar query later, he or she may obtain a suitable response. Toward the end of the talk, the school chatbot framework collects feedback from clients in order to improve the framework's competency.

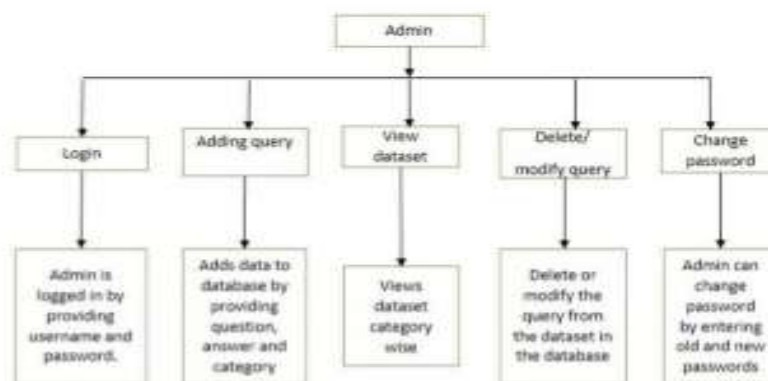
- a. **Login:** After clicking on the chatbot, you will be sent to the school's website. The chatbot framework greets the customer and requests the client's email address. The chatbot then begins visiting with the client.
- b. **Botindex:** When the client continues to select chatbot to find a solution to his/her issue, the chatbot displays a page with few options for school and detects his/her categorization of inquiry. If the customer has his inquiry answered, the chatbot's task is completed.
- c. **Asking Queries:** If the customer is dissatisfied with the rule-based response, the chatbot framework invites him/her to express his/her inquiry in words, and the reasonable response is provided by the chatbot framework.



**Fig.2. Flowchart for the chatbot's User Module.**

The client's inquiry is initially examined in the data set. If the query is significant, an appropriate response is delivered to the customer. If the inquiry is invalid, the chatbot instructs the customer to ask inquiries about the school. d. Contributing: Following the visit, the chatbot receives feedback from the client. Criticism is used to understand the clients' experiences with the chatbot. If the customer expresses strong criticism, the bot expresses gratitude and provides a crate to input any more questions. If the customer provides negative feedback, the bot suggests that the client elaborate on his/her query to be answered. The client's username is also saved, allowing the administrator to track client activity. On the other hand, the administrator who is in charge of maintaining the school chatbot framework contemporary has a few functions to do, such as adding the query to the knowledge base, changing the information, erasing the information, and viewing client criticism, among others. As seen in Fig. 3, all of the administrator's responsibilities are fully depicted below.

- a. Login:** There is just one administrator for the system (there is no enrollment for administrator). Administrators must login using their username and secret key, and the secret word is encoded using the SHA-256 Encryption computation. The login data is validated against the username and secret phrase that are saved in the data collection and are encoded using the SHA-1 Encryption computation. If the information provided is consistent with the data set, the administrator can enable the school chatbot framework.
- b. Add question:** If the administrator continues to add datasets, the chatbot allows the administrator to add questions in three ways: inquiry, reply, and selecting the specific categorization into which the dataset is included.
- c. View dataset:** If the administrator continues to see the dataset, the chatbot allows him to view the dataset by class. The chatbot also provides two more options: delete the dataset and change the dataset.
- d. Erase inquiry:** If the administrator continues to delete the question, the chatbot allows you to delete the question from the view page itself by selecting a specific class.



**Fig.3. Admin Module Flowchart**

**e. Adjust inquiry:** If the administrator continues to update current questions, the chatbot allows you to change the question from the view page itself by selecting a certain categorization.

**f. Change secret phrase:** If the administrator needs to update the secret word, the chatbot allows them to do so. To update the secret phrase, the administrator must enter the old secret phrase, the new secret phrase, and the new secret word on the change secret key site page. As a result, another secret phrase is created, jumbled, and stored in the code.

**g. Seeing invalid dataset:** If the administrator continues to receive faulty datasets, the chatbot allows them to view the datasets class by class. The faulty information is information that has received unfavourable feedback from the client or inquiries that the chatbot is unable to address. The chatbot also provides two other options: delete and alter the comparative inquiry.

**h. Alter Static responses:** The administrator can refresh or change the text displayed when a client selects buttons in the chatbot framework's GUI. The administrator may either refresh the data obtained by clicking the button on the website page or alter the capacity of the button by revising it in the data set. Each of the capacities enables the director to carry out any activity on the site without having to go through the data set.

#### IV. RESULTS AND DISCUSSION

The chatbot framework is used to suit the academic needs of the clients. A chatbot's recreation or generation of a response is information-based. Wordnet is responsible for retrieving the reactions, and in this case, it contains all rationales that are set off when the client setting is coordinated. When a client begins asking inquiries in the chatbot Graphical User Interface (GUI). The data set is searched for the answer to the query. If the response is located in the data set, it is displayed to the client; otherwise, the framework informs the administrator about the missing reaction in the data set and displays a predetermined reaction to the client. By logging into the administrator block on the site, the administrator can add the missing reaction to the data set. The chatbot is built on AIML, which is an Extensible Markup Language (XML). This enables various types of clients to obtain info such as most recent news, college rank holders, goals, updates regarding school examinations and exercises, and other scholastic data. Figs. 4, 5, and 6 each show a few pictures of the suggested chatbot structure.

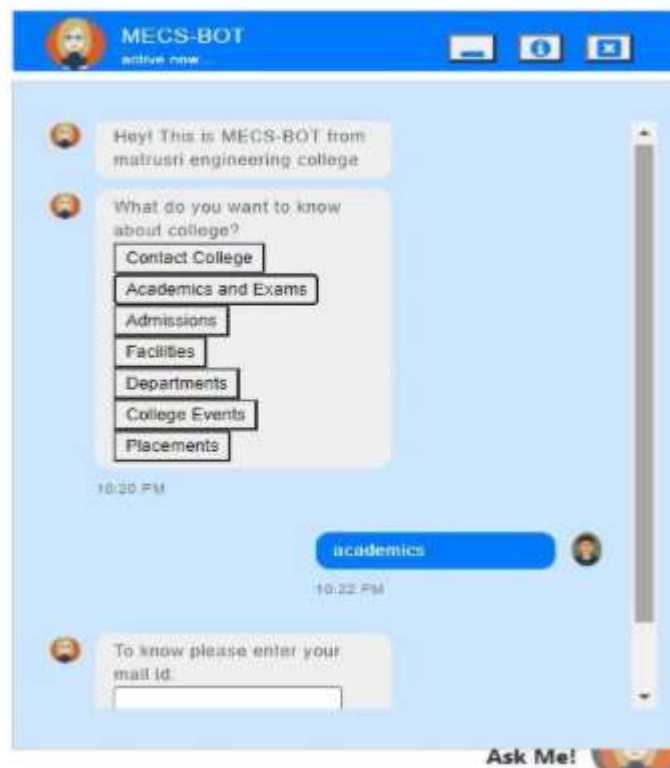
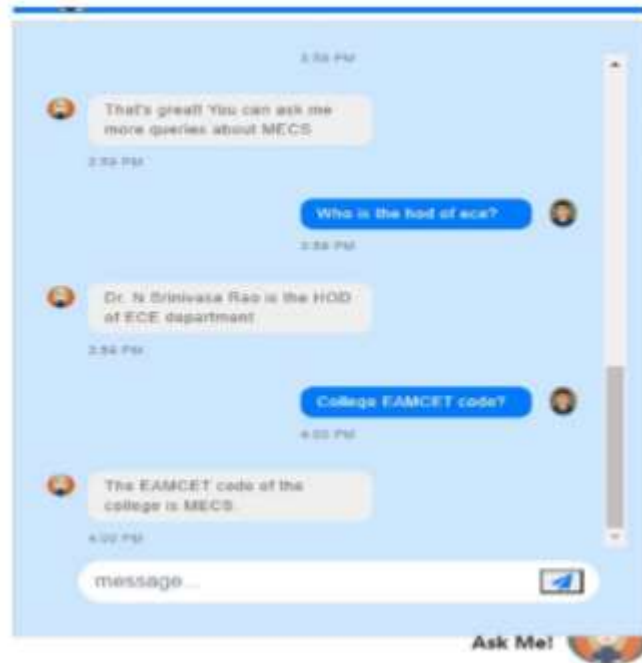


Fig.4. Chatbot menu with a list of options and a request for the client's email address

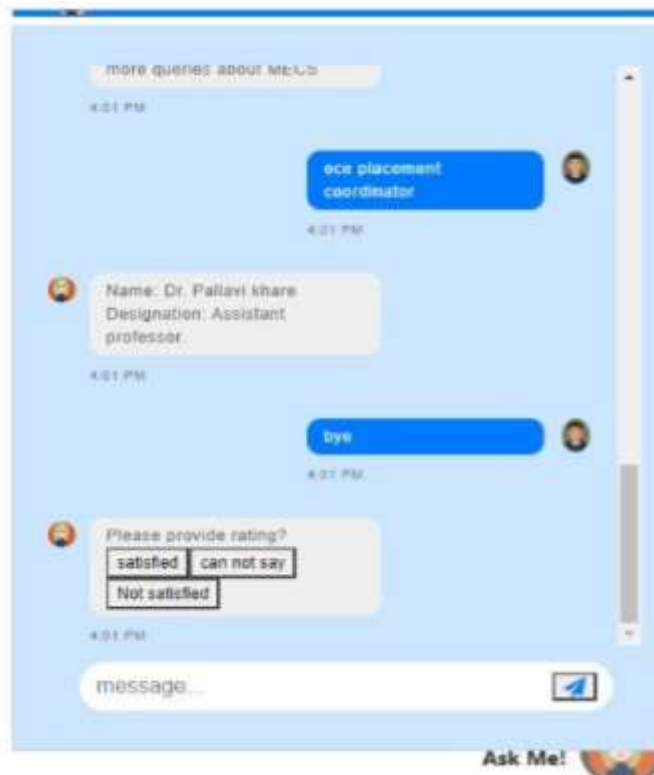
When a customer selects a category, the chatbot collects the client's email address. If the client's inquiry isn't met by the options, the chatbot framework provides an additional exchange box for him/her to compose his/her query about

education. Clients can ask any amount of inquiries about education to the chatbot system. Figure 5 depicts some of the client's questions. The chatbot framework immediately responds to any client enquiries.



**Fig.5. Client questions are being recorded by a chatbot.**

Following the conversation, the chatbot framework demands structure is used to determine if the client is satisfied that the customer provide feedback, as seen in Fig. 6. This input



**Fig. 6. System of Feedback**

System chatbot response to client questions. This critique is saved in the data collection, which may be used by the school to determine how well the chatbot is noting customer questions. To login, the administrator must provide a username and a secret word. Administrators are only authorised to access the data set with appropriate verification. After entering the right

username and secret phrase, the administrator is logged into the administrator menu page, as seen in Fig. 7. Where the administrator can perform activities such as adding information to the dataset, changing the current informational collection, viewing every invalid inquiry, changing the predefined information, viewing client criticism, erasing the current

information, and changing the administrator module's secret phrase. Every one of the progressions created here is clearly distinct in data.



Fig.7. page of the ministrator menu

If the consumer is dissatisfied with the chatbot's responses, he or she will provide negative feedback. If the administrator considers the queries to be significant, the administrator might add a response to the specific inquiry. If not, the administrator can delete the question with a single click.

## V. CONCLUSION

In this project, we created a school explicit chatbot framework that can be customised to train space chatbots; the implementation of this chatbot framework in the school site will make the page more client intuitive because it answers the client's questions precisely because it is a space explicit chatbot framework; and we also investigated our school chatbot framework configuration stages and possibly a couple strategies by which the accuracy of the chatbot framework can be improved. To make the chatbot framework's responses more significant and exact, the executive must equip the chatbot framework with more facts about the school and expand the scope of the information base. Eventually, garnering criticism from a future client can be beneficial. eventually overhauling the client questions.

## VI. REFERENCES

1. A manual for Natural Language Processing, Available at [https://en.wikipedia.org/wiki/Natural\\_language\\_processing](https://en.wikipedia.org/wiki/Natural_language_processing)
2. Chatbot definition, Available at [https://medium.com/@mg/bot-is-ahilariously-distorted-trendy-expression-let-s-fix-thatf1d63abb8ba7#:~:text=A%20chatterbot%20\(also%20known%20as,via%20auditory%20or%20textual%20methods](https://medium.com/@mg/bot-is-ahilariously-distorted-trendy-expression-let-s-fix-thatf1d63abb8ba7#:~:text=A%20chatterbot%20(also%20known%20as,via%20auditory%20or%20textual%20methods)
3. Introduction to Artificial Intelligence Markup Language, Available at [https://www.tutorialspoint.com/aiml/aiml\\_introduction.htm](https://www.tutorialspoint.com/aiml/aiml_introduction.htm)
4. Prof.K.Bala, Mukesh Kumar, SayaliHulawale, SahilPandita,"Chat-Bot For College Management System Using A.I." *International Research Journal of Engineering and Technology (IRJET)* Volume: 04, Issue: 11, Page no: 2030-2033| Nov 2017.
5. Porter Stemmer Algorithm, Available at <http://snowball.tartarus.org/calculations/watchman/stemmer.html>
6. Guruswami Hiremath, AishwaryaHajare, PriyankaBhosale, RasikaNanaware, Dr. K. S. Wagh, "Chatbot for school system" *International Journal of Advance Research, Ideas and Innovations in Technology (IJARIIT)* ISSN: 2454-132X, Volume: 4, Issue: 3, Page no: 37-43|2018.
7. Amey Tiwari, Rahul Talekar, Prof.S.M.Patil, "School Information Chat Bot System" *International Journal of Engineering Research and General Science (IJERGS)* Volume: 5, Issue: 2, Page no: 131-137| March-April 2017.
8. K. Jwala, G.N.V.G Sirisha, G.V. Padma Raju, "Fostering a Chatbot utilizing Machine Learning" *International Journal of Recent Technology and Engineering (IJRTE)* ISSN: 2277-3878, Volume: 8 Issue: 1S3, Page no: 89-92| June 2019.
9. Basics of Natural Language Toolkit, Available at <https://www.nltk.org/>
10. JNaeun Lee, Kirak Kim, Taeseon Yoon, "Execution of Robot Journalism by Programming Custombot utilizing Tokenization and Custom Tagging" *International Conference on Advanced Communications Technology (ICACT)* Page no: 566-570| Feb 2017.
11. Fundamentals of Natural Language Processing - Tokenization, Lemmatization, Stemming and Sentence Segmentation, Available at [https://colab.research.google.com/github/dairai/journals/master/ace/\\_notebooks/2020-03-19nlp\\_basics\\_tokenization\\_segmentation.ipynb#scrollTo=H7gQFbUxOQt b](https://colab.research.google.com/github/dairai/journals/master/ace/_notebooks/2020-03-19nlp_basics_tokenization_segmentation.ipynb#scrollTo=H7gQFbUxOQt b)
12. Jazzy spell checker Library, Available at [http://jazzy.sourceforge.net/\[13\]WordNetAlgorithm, Available athttps://wordnet.princeton.edu/](http://jazzy.sourceforge.net/[13]WordNetAlgorithm, Available athttps://wordnet.princeton.edu/)
13. SetiajiBayu, Wibowo Ferry "Chatbot Using a Knowledge in Database: Human-to-Machine Conversation Modeling" *seventh International Conference on Intelligent Systems, Modeling and Simulation (ISMS)* Page no: 72-77| Jan 2016. DOI: 10.1109/ISMS.2016.53.
14. Synsets for a word in WordNet, Available at <https://www.geeksforgeeks.org/nlp-synsets-for-a-word-inwordnet/#:~:text=WordNet%20is%20the%20lexical%20database,that%20express%20the%20same%20concept>